

# Model X13SJN

COMPACT CRAWLERS

# JLG®



## MORE EFFICIENCY

- Lithium technology with AC drive to optimize energy consumption

## MORE PRODUCTIVE

- Ultra compact stabilization area- it fits in a parking spot
- Onboard standard LED front and rear lights

## SMART DESIGN

- Scissor effect to automatically follow the wall
- Standard functions “go home” and “go back”

## Standard Features

- Platform (136 kg max. load capacity)
  - 1 person
- Footswitch
- Full proportional control (Electric proportional control system)
- Articulating jib
- Remote Control (via cable to platform)
- Removable platform control box
- Multi-lingual LCD display on platform box
- Load sensing system
- Platform designed for ease of removal/changeover
- AC Cable to platform
- 6,3 mm air line to platform
- 12,36 mm Waterline to platform
- Skyguard Skyline active system
- Go home function
- Back to work function
- Forklift pockets
- Extra pads onboard box
- LED integrated lights package
- 2nd drive speed
- One button for automatic stabilization
- Non Marking Outrigger Pads
- Cylinder Rod Protection on Outriggers
- Automatic cut-out when out of level
- Emergency descent systems
- Lubrication free bushes
- Lifting/Tie down rings
- Lanyard anchor points

## Standard Specifications

- AC electric motor 2.2 KW 50Hz 230V
- Batteries Lithium 4.15 kWh- 48V
- Onboard battery charger 220V (+/- 30V) 50-60 Hz
- Recharge time ~ 4h \*
- Hydraulic oil tank capacity 25 L
- Track size - Low profile non marking tracks 1.47 m x 0.18 m x 0.36 m

## Accessories & Options

- Narrow Platform 0.61 m x 0.78 m - 1 person
- Onboard battery Charger 110V (+/- 30 V) 50-60 Hz
- 1.47 m x 0.18 m x 0.36 m Low Profile Black Rubber Tracks
- Special paint

\* On flat batteries

# Model X13SJN

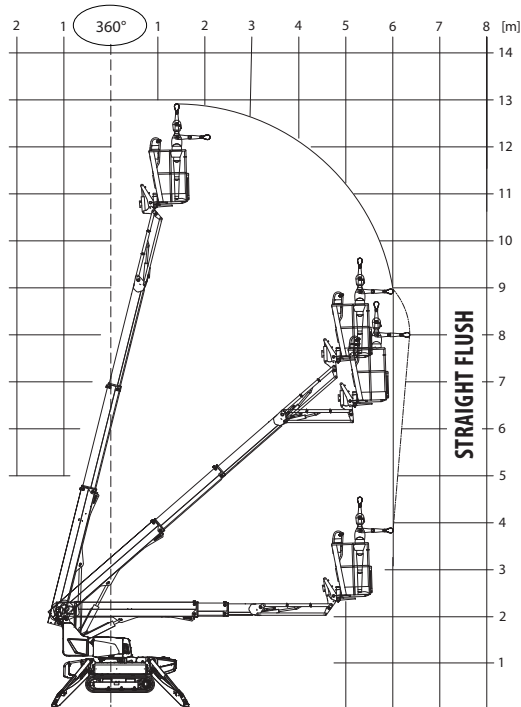
## COMPACT CRAWLERS

### Performance

• Working Height	12.9 m
• Platform Height	10.9 m
• Horizontal Outreach (Std Platform)	5.75 m
• Horizontal Working Outreach (Std Platform) **	6.4 m
• Swing (non continuous)	360°
• Platform Capacity	136 kg
• Jib – Overall Length	1.49 m
• Jib – Range of articulation	89° (+0/-89°)
• Platform size (standard 2 persons)	0.60 m x 1.31 m
• Dimensions	
A1. Stowed width (with platform)	1.3 m
A2. Stowed width (without platform)	0.748 m
B. Stowed height (on tracks)	1.98 m
C1. Stowed length (on tracks) with Platform	4.31 m
C2. Stowed length (on tracks) without Platform	3.69 m
D. Outrigger footprint – total	2.9 m x 2.45 m
Airline to platform	12,6 mm
Machine weight (with standard platform) *	1,895 kg
Maximum ground bearing pressure (on outriggers) Ø 30 cm	1.9 kg/cm <sup>2</sup>
Maximum ground bearing pressure (on tracks)	0.57 kg/cm <sup>2</sup>
Maximum drive speed (with standard second speed) Electric	3.2 km/h
Gradeability	28.7 %
Maximum operating slope	14°
Max. Approach / Depart angles	Front 20° / Rear 29.5°
Width of Undercarriage (Retracted/Extended)	0.75 m/ 1.10 m

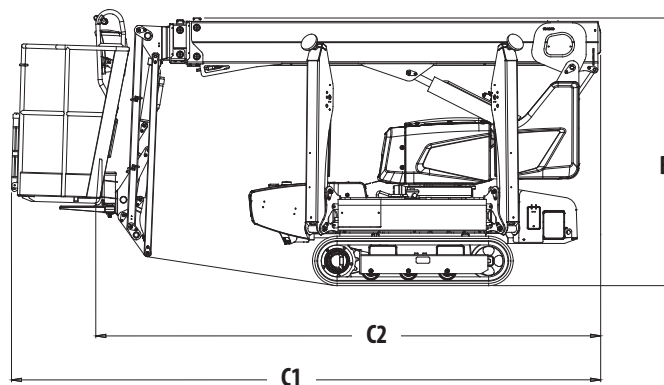
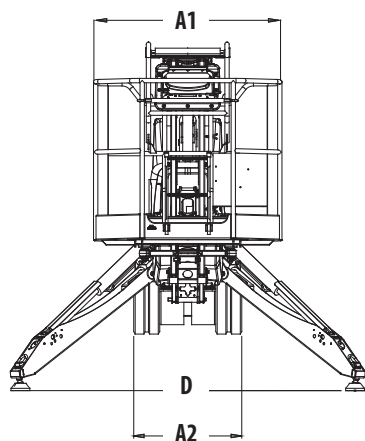
\* Certain options or country standards may increase weight and/or dimensions.  
 \*\* Incl. 0.65 m outreach beyond platform

### Reach Diagram



CAPACITY 136 kg  
 1 person 80 kg + tool box 56 kg

### Dimensions



### IMPORTANT

JLG is continually researching and developing products and reserves the right to make modifications without prior notice. All data in this document is indicative. Certain options or country standards will increase weight. Specifications may change to meet country standards or with the addition of optional equipment.

Due to continuous product improvements, JLG Industries reserves the right to make specification and/or equipment changes without prior notification.



### JLG EMEA BV

Polaris Avenue 63  
 2132 JH Hoofddorp  
 The Netherlands  
 Tel.: +31 (0)23 565 5665  
[www.jlg.com](http://www.jlg.com)

An Oshkosh Corporation Company