

Model H800AJ

HYBRID ARTICULATING BOOM LIFTS



MORE ECONOMIC

- Hybrid diesel and electric technology for low emissions and noise.

MORE PRODUCTIVE

- Get access to work any job site environment in respect of the regulations, inside and outside.

MORE ACCESS

- Conquer rough terrain with standard oscillating axle and four-wheel drive, delivering optimised grip and stability.

SMART DESIGN

- Reduce maintenance with an all steel turntable hood to protect components.



Standard Features

- 0.91 m x 1.83 m low mount platform
- Side entry with drop bar mid rail
- Multiple function operation
- Full proportional drive joystick control with integral thumb steer switch
- Full proportional main boom and swing joystick control
- Multiple speed control for lower boom, telescope and platform rotate
- Selectable creep speed on drive / lift and swing functions
- 1.83 m articulating jib
- 180 degree powered platform rotator
- Platform console machine status light panel¹
- Load sensing system
- AC power cable to platform
- 18.5 kW (25 hp) Kubota D1305- E4B
- Engine distress warning /shut down system²
- Gull wing steel turntable hoods
- Swing-out engine tray
- Control ADE® (Advanced Design Electronics) System
- Hydrostatic drive transmission
- Four wheel drive
- Two wheel steer
- Horn
- Automatic Engine Idle, Start/Stop
- Automatic Battery Charger in Hybrid Mode
- 4 degree tilt alarm and indicator light
- QuikStik® boom design
- 18 - 625 foam filled lug tread tyres
- Oscillating front axle
- Load sensing boom function pump
- Lifting/tie down lugs
- Hour meter
- Ground control selector switch with key lock
- Skyguard without beacon
- 12V-DC auxiliary power

Standard Specifications

- | | |
|-------------------------|-----------------------------------|
| • Diesel Engine | 18.5 kW (25 hp) Kubota D1305- E4B |
| • Batteries | 205 AH Maintenance free AGM |
| • Tyres | 18 - 625 Foam Filled |
| • Motor/Generator Power | 18.5 kW |
| • Fuel Tank Capacity | 94.64 L |
| • System Voltage | 84V |
| • Batteries Quantity | 14 |
| • Hydraulic Capacity | 151.42 L |
| • Auxiliary Power | 12V DC |

Accessories & Options

- 0.91 m x 2.44 m low mount platform
- Side entry with inward swing gate
- 13 mm air line to platform
- 18 - 625 foam filled non marking
- On-board 4,000W generator
- SkyPower® package 7,500 watt on-board generator
- SkyWelder® package 250 amp welder in the platform³
- All motion alarm
- Light package³
- Platform flood lights
- Platform worklights
- Head & Tail Lights
- Flashing amber beacon
- Plugs & Sockets
- Hostile environment package⁴
- Hydraulic oil cooler
- Skyguard with beacon
- Corner storage tray
- Cold weather package⁶
- Soft Touch System
- Fall Arrest Platform (0.91 x 2.44m)
- Platform work surface
- 9 L fire extinguisher
- Quintolubric hydraulic oil (fire resistant)
- Synthetic biodegradable hydraulic oil
- Biodegradable hydraulic oil
- Hydraulic oil mobil DTE 10 EXCEL 32
- Special paint colour
- ClearSky Locate
- ClearSky CAN

¹ Provides indicator lights at platform control console for system distress, low fuel, tilt light, and foot switch status.

² Low oil pressure and high coolant temperature alarms with shut-down enabled/disabled by analyser.

³ Includes platform mounted work lights and head & tail lights.

⁴ Includes console cover, boom wipers and cylinder bellows.

⁵ Available only with drop bar type entry

⁶ Includes a battery blanket, hydraulic tank heater, block heater and glow plugs (diesel only).

Model H800AJ

HYBRID ARTICULATING BOOM LIFTS

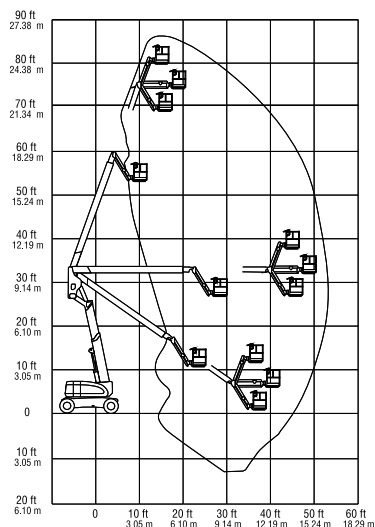
Performance

• Working Height	26.38 m
• Platform Height	24.38 m
• Horizontal Outreach	15.80 m
• Working Outreach	16.45 m
• Up and Over Height	9.78 m
• Swing Non-Continuous	360°
• Platform Capacity – Unrestricted	230 kg
• Platform Rotator (Hydraulic)	180°
• Jib – Overall Length	1.83 m
• Jib – Range of articulation	130° (+70°/ -60°)
A. Platform Size	0.91 m x 1.83 m
B. Overall Width	2.49 m
C. Tailswing (working condition)	1.06 m
D. Stowed Height	3.00 m
E. Stowed Length	11.13 m
F. Wheelbase	3.06 m
G. Ground Clearance	0.28 m
• Machine weight *	16,110 kg
• Maximum Ground Bearing Pressure	5.3 kg/cm ²
• Drive Speed at transport	5.55 km/h 4WD
• Drive Speed at elevation	0.43km/h 4WD
• Gradeability	n/a 2WD / 45% 4WD
• Axle Oscillation	0.20 m
• Turning Radius - Inside	3.81 m 2WS / 1.83 m 4WS
• Turning Radius - Outside	6.02 m 2WS / 3.53 m 4WS

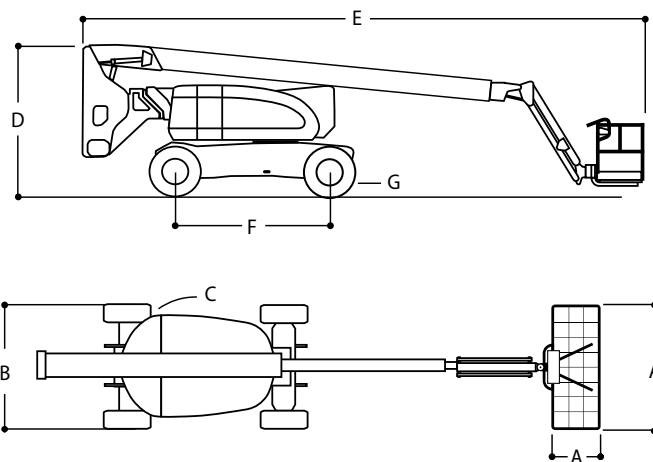


*Certain options or country standards may increase weight and/or dimensions.

Reach Diagram



Dimensions



IMPORTANT

JLG is continually researching and developing products and reserves the right to make modifications without prior notice. All data in this document is indicative. Certain options or country standards will increase weight. Specifications may change to meet country standards or with the addition of optional equipment.

Due to continuous product improvements, JLG Industries reserves the right to make specification and/or equipment changes without prior notification.



JLG EMEA BV

Polaris Avenue 63
2132 JH Hoofddorp
The Netherlands
Phone: +31 (0)23 565 5665
www.jlg.com

An Oshkosh Corporation Company