

# E400AJPN

## ELECTRIC BOOM



### KEY SPECS

**Platform Height**  
12.19 m

**Up and Over Height**  
6.55 m

**Horizontal Outreach**  
6.41 m

**Platform Capacity**  
230 kg

### KEY FEATURES

- Achieve maximum maneuverability by moving over uneven surfaces with Automatic Traction Control.
- Achieve optimum productivity with longer duty cycles.
- Produces zero emissions, 100% environmentally friendly.
- Enhanced up and over access with jib.

### ACCESSORIES & OPTIONS

- 0.76 m x 1.52 m low mount platform swing gate
- 0.76 m x 0.91 m low mount platform, rear entry \*\*
- 13 mm air line to platform
- 305 A/hr maintenance free AGM batteries in lieu of standard
- Platform worklights
- Head and tail lights
- Plugs & Sockets
- Programmable Security Lock
- Synthetic Biodegradable Hydraulic Oil
- Acrylic console shield
- Cylinder bellows
- Skyline with beacon
- Beacon red colour

### STANDARD SPECIFICATIONS

#### Performance

Working Height	14.02 m
Platform Height	12.19 m
Horizontal Outreach	6.41 m
Working Outreach***	7.06 m
Up and Over Height	6.55 m
Swing (non-continuous)	360°
Platform Capacity – Unrestricted	230 kg
Platform Rotator (Hydraulic)	180°
Jib - Overall Length	1.22 m
Jib - Range of articulation	144° Vertical (+84°/ -60°)
JibPLUS® - Range of Articulation	180° Horizontal
Machine weight *	5,811 kg
Maximum Ground Bearing Pressure	6.7 kg/cm <sup>2</sup>
Occupied floor area **	2.8 m <sup>2</sup>
Drive Speed	6.7 km/h
Gradeability	30%
Turning Radius - Inside	0.86 m
Turning Radius - Outside	3.15 m

\* Certain options or country standards may increase weight and/or dimensions.  
 \*\* If the option was chosen  
 \*\*\* Horizontal outreach + 0.65 m

#### Power Source

Electrical System	48 V DC
Batteries	8 x 6V 370 A/h
Drive Motors	Dual AC Traction

#### Tires

Tires	22 x 6 x 17.05 (front) Solid Non-mark 25 x 7-12 (rear) Solid Non-mark
Brakes	Automatic Spring Applied

#### Hydraulic System

Hydraulic Motor	DC Electric motor
Hydraulic Pump	Gear Pump
Hydraulic System	15.14 L

### STANDARD FEATURES

- 0.76 m x 1.52 m low mount platform swing gate
- Multiple function operation
- Full proportional drive joystick control with integral thumb steer switch
- Full proportional main boom and swing joystick control
- Multiple speed control for lower boom, telescope and platform rotate
- Selectable creep speed on drive / lift and swing functions
- 1.22 m articulating jib
- JibPLUS® with 4 way axis 1.22m Jib
- 180 degree powered platform rotator
- Platform console machine status light panel \*
- Load sensing system
- AC power cable to platform
- Two Wheel Direct Electric Drive with AC motors
- 8 x 6V 370 A/hr deep cycle batteries
- Automatic traction control
- Programmable "Personality" settings
- On-board self-diagnostic testing
- Enclosed battery / electrical compartment
- 20 amp automatic battery charger
- Automatic rear wheel brakes
- 3 degree tilt alarm and indicator light
- Non mark solid rubber tires
- Lifting/tie down lugs
- Ground control selector switch with key lock
- Battery condition indicator
- Hour meter
- Horn
- All motion alarm
- Amber strobe light
- Skyline active enhanced protection system
- Skyline without beacon
- Platform tool tray
- Manual descent system
- Clearsky SMART FLEET connectivity module - Subscription through On Line Express

\* Provides indicator lights at platform control console for system distress, low battery, tilt light, and foot switch status.  
 \*\* Available only with drop bar type entry

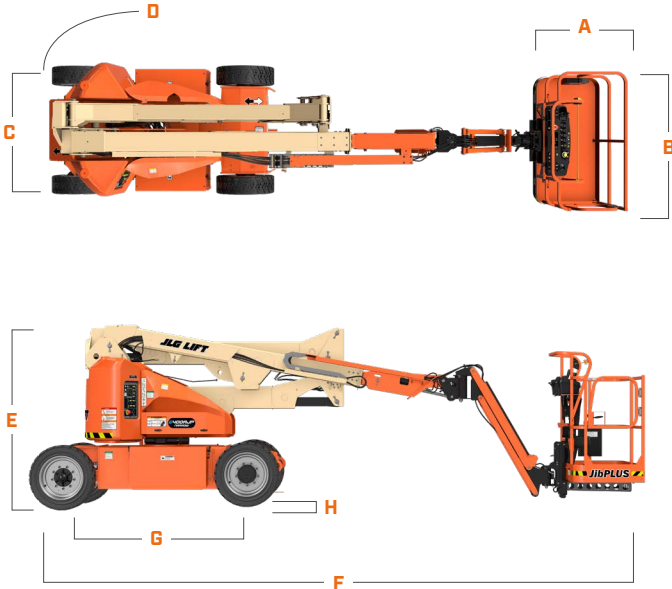
# E400AJPN

## ELECTRIC BOOM



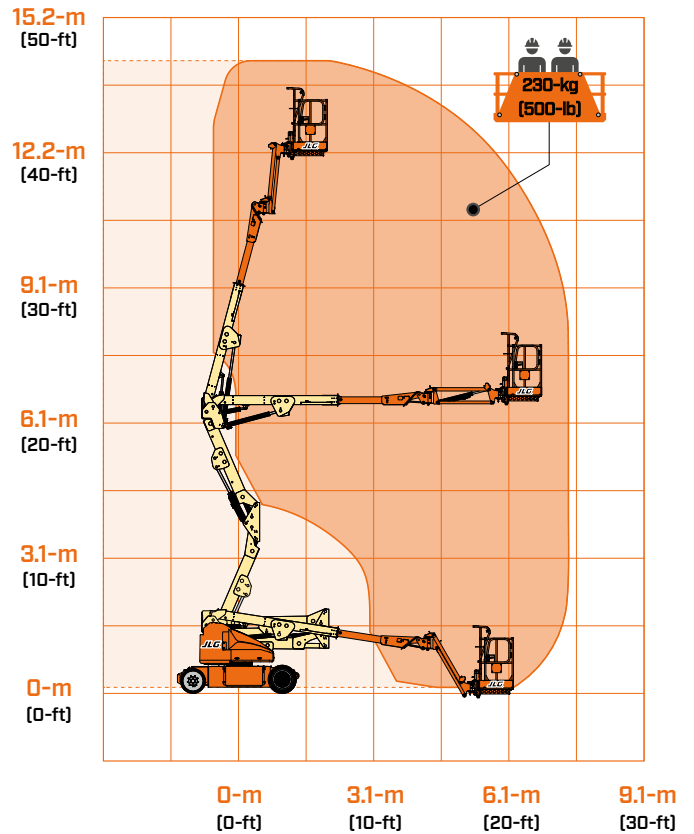
### DIMENSIONS

All dimensions are approximate



<b>A.</b> Platform Width	0.76 m
<b>B.</b> Platform Length	1.22 m
<b>C.</b> Overall Width	1.50 m
<b>D.</b> Tailswing (working condition)	0.10 m
<b>E.</b> Stowed Height	1.97 m
<b>F.</b> Stowed Length	5.50 m
<b>G.</b> Wheelbase	2.00 m
<b>H.</b> Ground Clearance	0.22 m

### REACH DIAGRAM



#### IMPORTANT

JLG is continually researching and developing products and reserves the right to make modifications without prior notice. All data in this document is indicative. Certain options or country standards will increase weight. Specifications may change to meet country standards or with the addition of optional equipment.

Due to continuous product improvements, JLG Industries reserves the right to make specification and/or equipment changes without prior notification.



**JLG EMEA BV**  
 Polaris Avenue 63  
 2132 JH Hoofddorp  
 The Netherlands  
 Tel.: +31 (0)23 565 5665  
[www.jlg.com](http://www.jlg.com)

**An Oshkosh Corporation Company**